

Overview

Designed for maximum flexibility with multiple carriers and cell towers in most environments, the SureCall Omni Antenna is an omni-directional fiberglass outdoor antenna that operates in a 360° field of propagation with a range of up to 30 miles.

This ultra wide band outdoor antenna transmits and receives signals in all directions and is designed to cover 2G/3G/4G/5G and WLAN systems for Cellular, PCS, AWS and LTE frequencies.

- » N-Female connector (50 Ω)
- » 1.5/2/4dBi Max Gain
- » Wide band: 2G, 3G, 4G & 5G (617 - 2700 MHz)
- » Mount upright using included mounting hardware
- » Easy to Install



Specifications

Frequency	617-697 / 698-960 / 1710-2700 MHz
Beamwidth	H:360° E:60°/ H:360° E:55°/ H:360° E:40°
Max Gain	1.5/2/4dBi
VSWR	<2
Input Impedance	50 Ω
Polarization Type	Vertical
Max Power	100W
Radiation Pattern	Omni-Directional
Connector Type	N-Female
Dome Diameter	60 mm
Dimensions	12.8 x 2.56 in (65 x 325 mm)
Weight	1.55 lbs (700 g)
Cover Material	Fiberglass (White)
Operating Temp.	-22°F to +176°F
Operating Humidity	5% ~ 95%

Installation

The omni antenna is omni-directional, which receives and sends signals in a 360° radius. The provided hardware allow for either a surface mount or pole-mount. The antenna should be mounted in an upright position. See illustrations below.

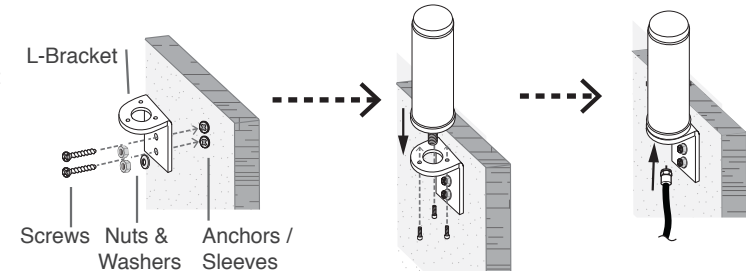
Option A: Mounting antenna to a vertical surface:

1. Using vertical plate of bracket, mark position of desired placement.
2. Unscrew nut on end of stucco screw and remove it along with lock washer and regular washer.
3. Place vertical plate into desired location and tap the screws, head-first, along with the sleeve into stucco with depth of 1/2" to 5/8".
4. In this order, place washer, lock washer, and nut on each screw and tighten until secure. When tightening screw, sleeve will expand to secure plate.
5. Use provided screws to secure antenna base onto horizontal plate.
6. Connect antenna to cable connector for the outdoor cable provided with your kit and run along route to planned location of your booster.

Note: If desired surface for installation is wood or concrete, wood or masonry screws for L-plate mounting will have to be purchased separately.

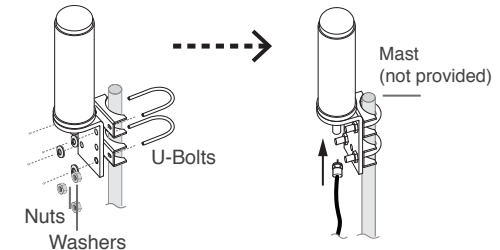
Option A:

Surface Mount



Option B:

Mast / Pole Mount



Compatibility

Booster Compatibility: All SureCall 2G-5G home and industrial in-building signal boosters

Cable Compatibility: Low coax cables with N Male on either end (SC-400, SC-240, etc.)

Accessory Compatibility: SureCall Couplers and Splitters

